



Luna Collection - Polished Nickel Chandelier

As low as **\$1,848**

Out Of Stock

**SKU**

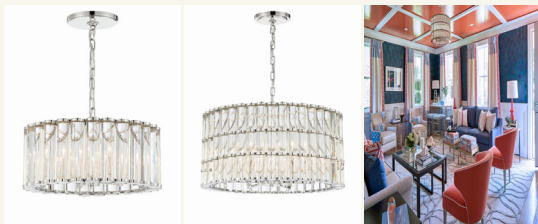
HOL01L04LNAPN

**Color:**

Polished Nickel

**Size:**

W:39cm, W:57cm



## Details

The Luna collection, designed by Libby Langdon, is a sleek and almost masculine collection featuring a series of chunky Lucite rods and a polished nickel frame to highlight the shape. The fixture's view from below is as important as what it looks like from the side. The metal work follows the shape of the circular rods creating a scallop pattern. The filtered light bounces between the Lucite rods and gives off a beautiful glow. Architectural in nature, the Luna is a modern take on a crystal-style wall mount.

<b>PRODUCT WIDTH</b>	4 Light: 38 (cm) - 6 Light: 57 (cm)
<b>PRODUCT HEIGHT</b>	4 Light: 28 (cm) - 6 Light: 45 (cm)
<b>MAX ADJUSTABLE HEIGHT</b>	210 (cm)
<b>LIGHTS</b>	4 to 6 X E12 Bulbs (Not Included)
<b>DIMMABLE</b>	Yes
<b>WEIGHT</b>	15 to 28kg approx.
<b>FRAME COLOUR</b>	Nickel
<b>MATERIAL</b>	Iron/Lucite
<b>ASSEMBLY</b>	By Installing Electrician
<b>APPROVALS</b>	SAA Australian Certified